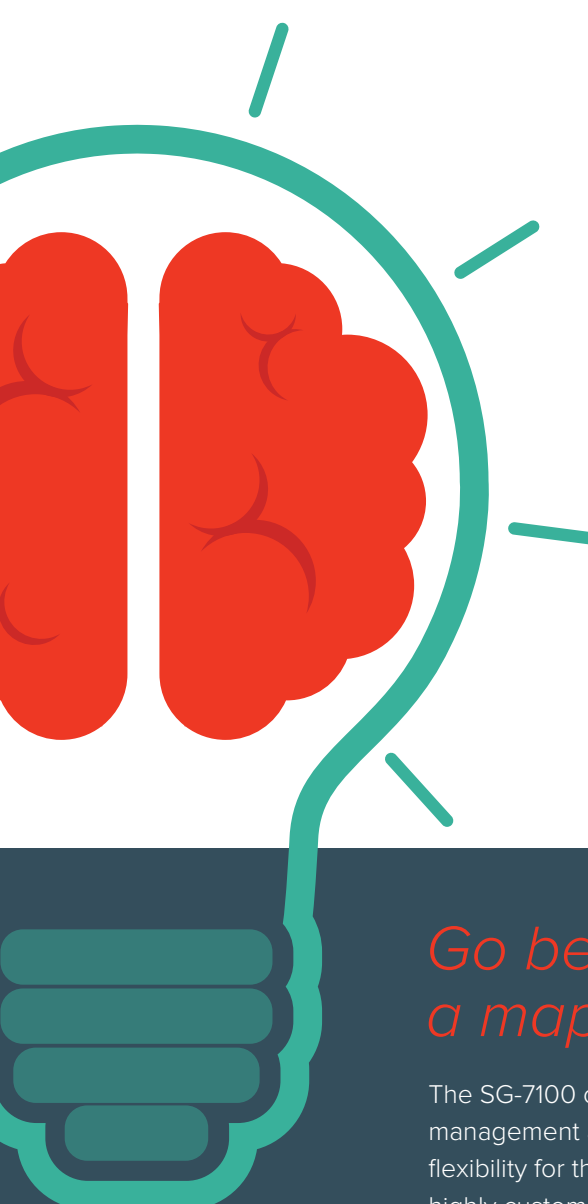


Smarter data
is powerful data

Introducing
SkyWave SG-7100
The powerfully smart cellular gateway



SkyWave



Get more from M2M data

Most machine-to-machine (M2M) solutions are not built to allow users to get the most of their data. Programming, configuration, protocol and network restrictions compromise access to smart data. The SkyWave SG-7100 changes all that. It's the first powerfully smart, fully-programmable and configurable cellular communications gateway.

This compact, flexible, and robust M2M communications platform enables the collection of actionable data intelligence over cellular networks for fleet management and industrial asset monitoring applications. And it can be configured with Wi-Fi®, satellite, Ethernet and other network technologies to meet any critical communications and operational data management needs.

Go beyond basic dots on a map or simple alarms

The SG-7100 opens up a whole new world of intelligent M2M data management and communications possibilities. It provides unrivalled flexibility for the development and delivery of quick, out-of-the-box or highly customized solutions that go beyond basic, position-oriented, dots-on-a-map data and alerts. And it leverages the full capabilities of cellular broadband to enable value-added services for fleet management, in-cab messaging, workflow automation, and supervisory control and data acquisition (SCADA) applications.



Network Ready



Device Agnostic



Configurable/
Programmable



Profit Generating



Analytics



Satellite Ready

Modular hardware architecture

To address a variety of application and WAN requirements, the SG-7100 offers multiple configuration options for cellular, Wi-Fi, satellite, and Ethernet networking. Plus, one-wire, serial, USB, Ethernet, digital and analog peripheral port options enable in-field and LAN communications to local equipment, networks and sensors.

Fully programmable or configurable

The integrated SkyWave Lua Services Framework and open Linux environment make the development and integration of custom M2M applications possible. And standard software applications are available for off-the-shelf fleet management and fixed equipment monitoring and control solutions. Plus, for maximum flexibility, the SG-7100 is compatible with other SkyWave IsatData Pro satellite and satellite-cellular terminals.

Integrated HTML5-compatible web server

The SG-7100 includes an advanced web server that supports a variety of workforce automation web applications built with HTML5, including electronic forms. With this web server, the SG-7100 enables HTML5 applications to communicate with most web-enabled devices without requiring separate versions of the application for each device.



Fleet Management

The SkyWave SG-7100 cellular gateway provides reliable, always-on communications for more intelligent management of vital fleet operations data from vehicles anywhere in the world:

Advanced tracking and monitoring

- Improves dispatching for on-time pickup and delivery
- Reduces operating costs and improves competitiveness through continuous communication of accurate location and status information, including idling and collision alerts

Custom applications and solutions

- Supports a variety of customized fleet management applications for workflow automation, including dispatch, electronic forms/signatures, location-based services, hours of service (HOS), in-cab messaging, vehicle telemetry, and equipment and cargo monitoring

Secure communications

- Delivers vital data from the edge to significantly improve the security, productivity and efficiency of mobile workers and vehicles anywhere, even beyond the reach of cellular networks

Accurate compliance data

- Ensures compliance with insurance and government regulatory requirements with immediate access to accurate HOS and vehicle maintenance data



SCADA

The compact and robust SkyWave SG-7100 cellular gateway goes beyond redundant status checking and alerts offered by traditional SCADA solutions:

Intelligent asset management

- Enables more intelligent monitoring, control and management of industrial sensors and equipment, such as flow meters, pumps, and surveillance cameras from all sites

Detailed operations data

- Provides ready access to intelligent data needed to improve daily operations, enhance productivity, and avoid costly maintenance shut downs and delays

Lower costs, higher productivity

- Reduces the need for on-site inspections of remote assets by field personnel
- Improves productivity by eliminating time-consuming paper-based forms for inspection, repair and calibration reports

Reliable, always on communications

- Lowers maintenance costs with reliable, always on links for monitoring and diagnosing of potential equipment failures before they happen

Trust proven M2M experience and expertise

The SkyWave SG-7100 is the latest innovation from the company setting the standard for richer information delivery from M2M applications, solutions and services.

SkyWave is a leading provider of reliable, always on M2M communications solutions for mobile and fixed remote industrial applications. Our satellite, cellular and dual satellite-cellular M2M offerings are based on extensive experience providing hardware, network and application solutions that work together to deliver a

reliable, cost-effective, integrated approach for tracking, monitoring, control, and management of vehicles, vessels and equipment anywhere in the world.

SkyWave is also the only M2M equipment and services company in the world with a global third generation network that enables reliable and cost-effective interaction with mobile and fixed industrial assets for the transportation, maritime, energy and resources, SCADA, mining, and defence applications.

Find out more about SkyWave and
the SkyWave SG-7100 at:

skywave.com



Land



Maritime



Utilities



SCADA



Mining



Defence

About SkyWave

SkyWave Mobile Communications is a global provider of satellite, cellular and satellite-cellular devices and services and operates the only 3rd generation satcom network in the world for the Machine-to-Machine (M2M) market. SkyWave's products provide dependable communication, tracking, monitoring and remote management of fixed and mobile assets. Over the past 17 years, SkyWave has designed, manufactured and shipped more than 750,000 Inmarsat-based satellite terminals to customers globally in the transportation, maritime, oil and gas, utilities and government sectors. For more information, please visit www.skywave.com.

SkyWave